

# Corruption Rings

How to find related companies in public procurement

**The problem: Open data** in the Kyrgyz Republic is not optimized for investigative journalism

What does the *user* see?



↓ Скачать виде JSON формате Open Contracting Data Standard (OCDS)

NUMBER	NAME OF COMPANY	TYPE OF PROCUREMENT	PURCHASE NAME	PROCUREMENT METHOD	PLANNED AMOUNT	DATE PUBLISHED	DEADLINE FOR SUBMISSION OF APPLICATIONS
191202203798889	Филиал ОАО "Электрические станции" Ат-Башинская ГЭС	Goods	ПОКУПКА РАСХОДНЫХ МАТЕРИАЛОВ ДЛЯ ОРГТЕХНИКИ (С УЧЕТОМ НДС)	One stage	89,163.2	02.12.2019 13:09	16.12.2019 14:08
191202203333195	Муниципальное предприятие "Ноокат Жарыктандыруу"	Goods	ЗАКУПКА И УСТАНОВКА ТРАНСФОРМАТОРА	Direct to sign the agreement	400,000	02.12.2019 13:07	04.12.2019 13:13
191202203734275	Учреждение "Тогузтороузский центр общеврачебной практики имени Аманкана Жакишова"	Goods	ПРИБОРЕНИЕ ПРОДУКТОВ ПИТАНИЯ	Simplified	49,350	02.12.2019 13:04	09.12.2019 16:00
191202203221468	Ошское государственное музыкальное училище им. Ниязалы	Goods	ПОКУПКА КАНЦЕЛЯРСКИХ ПРИНАДЛЕЖНОСТЕЙ И СТАЛЬНЫХ ТРУБ	Direct to sign the agreement	22,700	02.12.2019 13:04	04.12.2019 13:30
191202203319606	Муниципальное предприятие "Ноокат Жарыктандыруу"	work	ПРИБОРЕНИЕ И УСТАНОВКА Ж/Б ОПОР И СВЕТИЛЬНИКОВ	Simplified	750,000	02.12.2019	

the user sees a "Simple table"

The lack of data leads to **corruption**

**The problem: how to identify **corruption chains?****

**Solution:** present all open data in Kyrgyzstan in the form of a **graph database** with focus on relationships

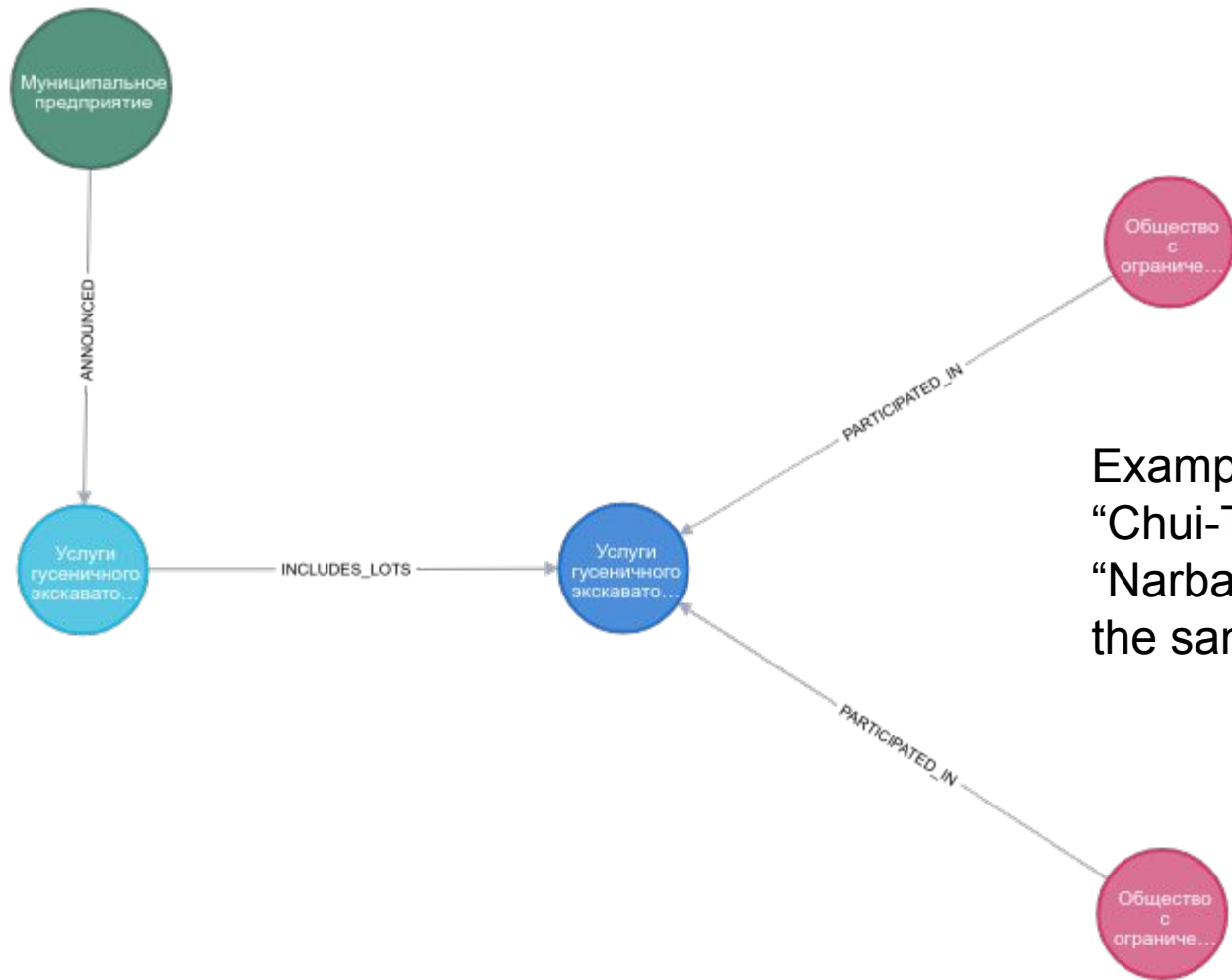
Green circle is a  
**Procurement entity**

Light blue circle is a  
**Tender**

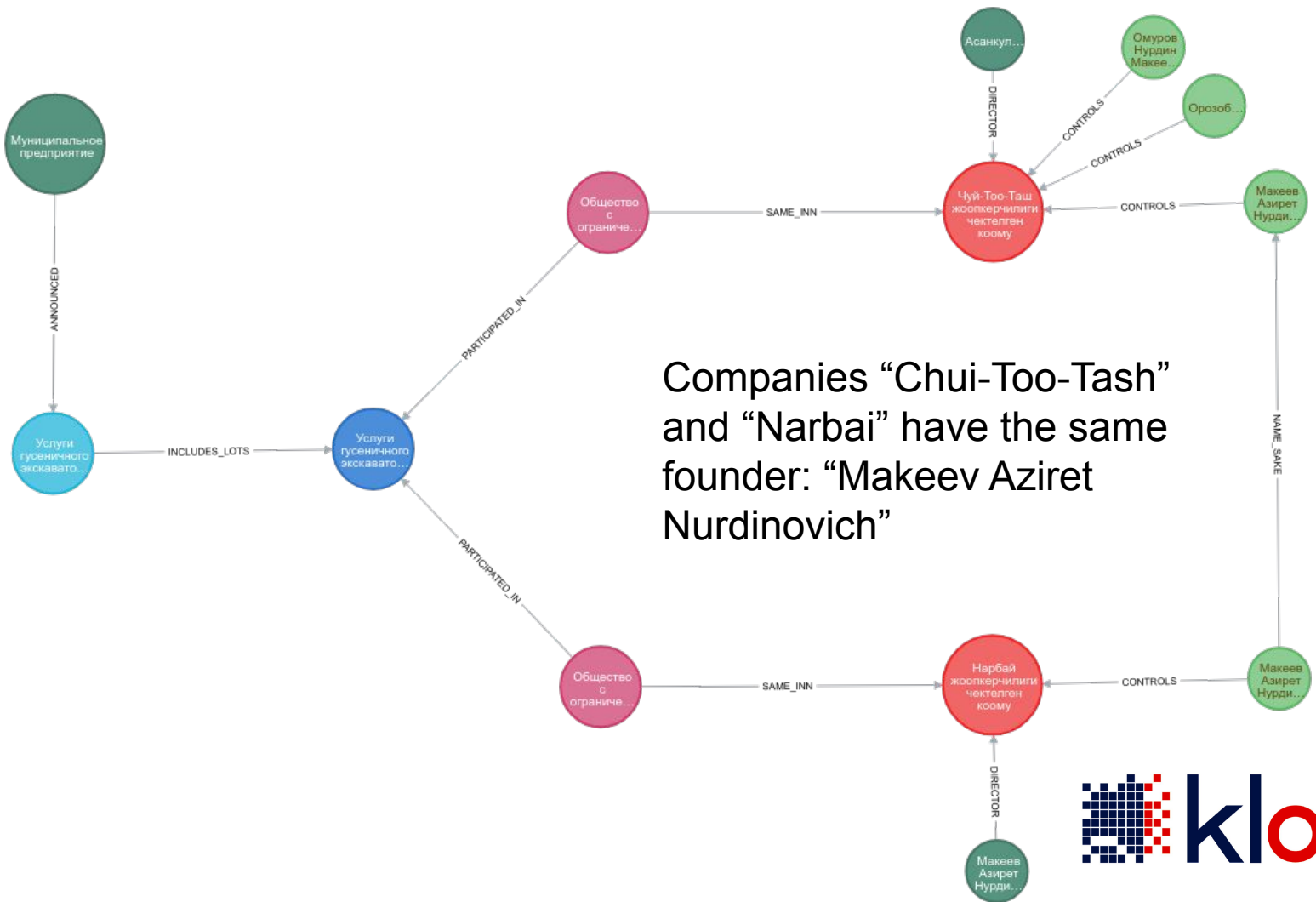
Blue circle is a  
procurement **Lot**





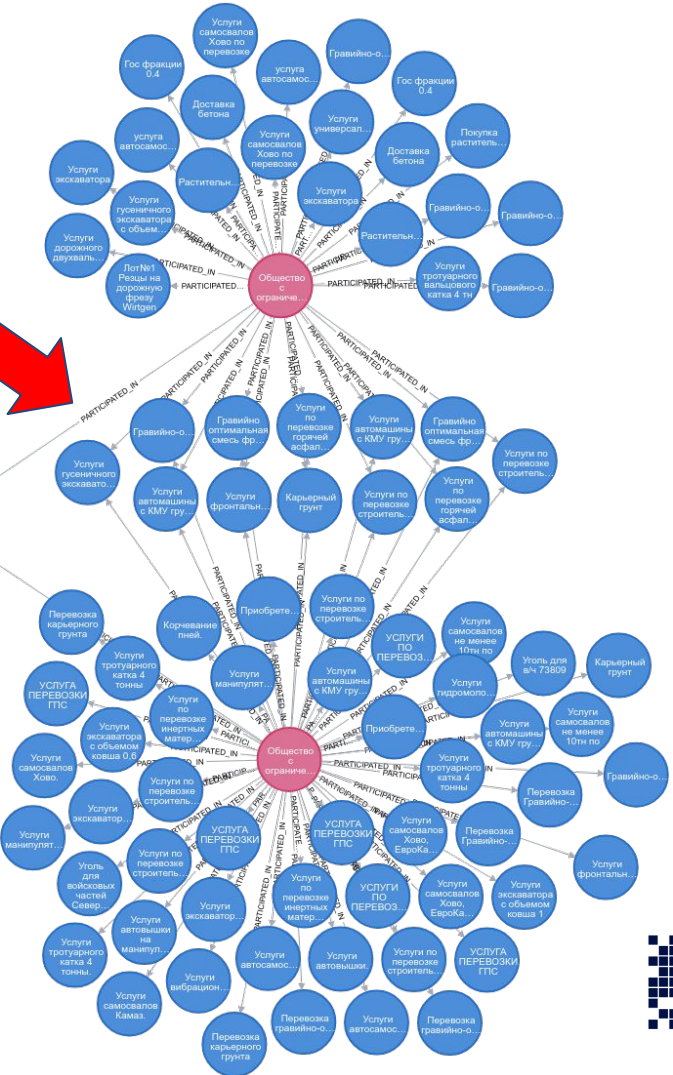
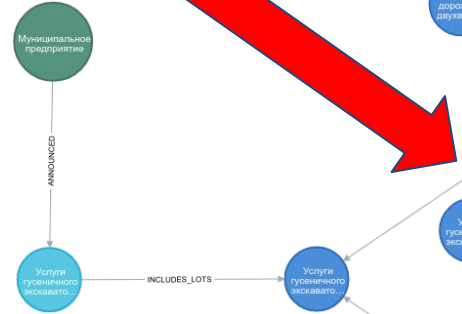


Example: Companies “Chui-Too-Tash” and “Narbai” participated in the same procurement lot

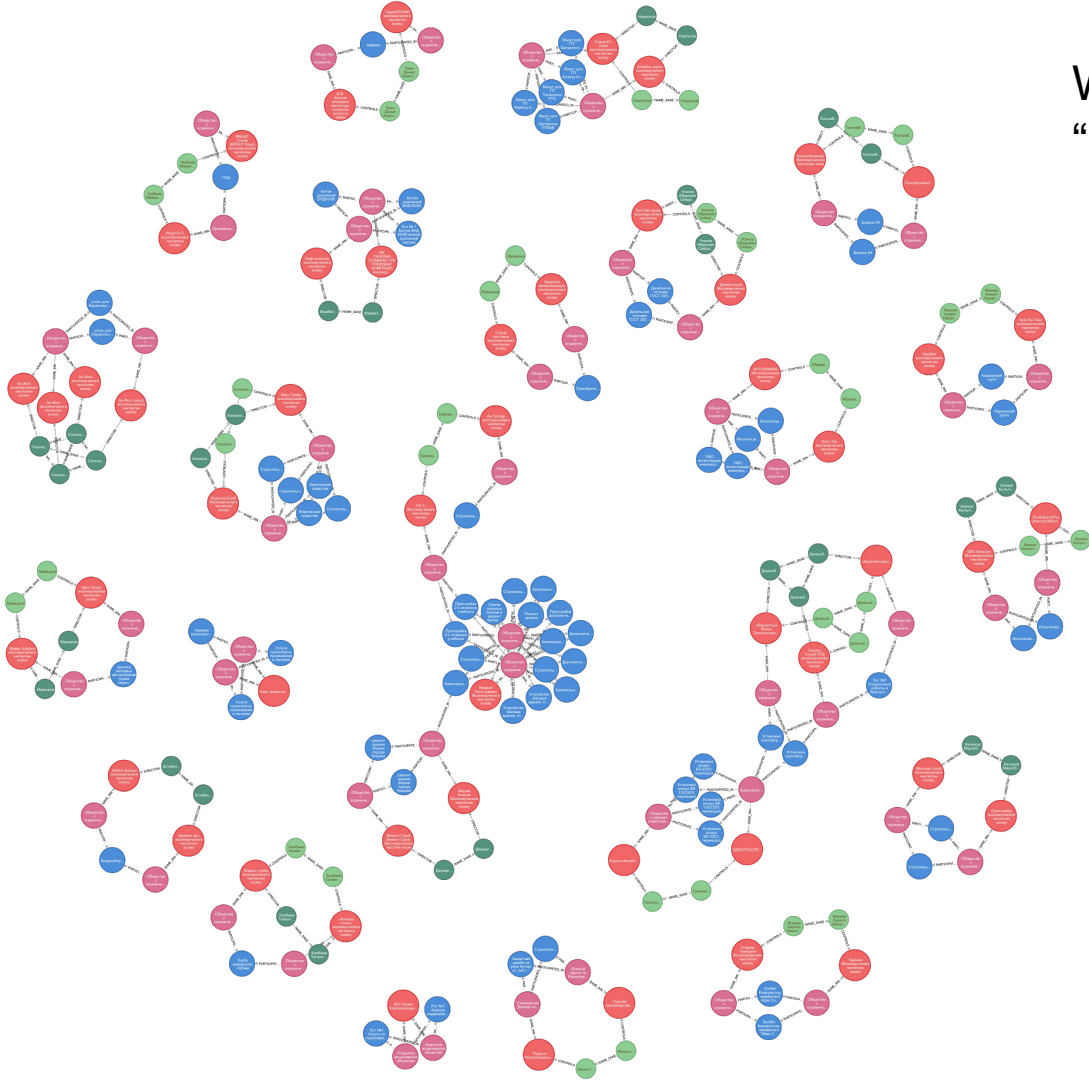


Companies “Chui-Too-Tash” and “Narbai” have the same founder: “Makeev Aziret Nurdinovich”

# Companies “Chui-Too-Tash” and “Narbai” participate in the same lots



We found a lot of simple  
“corruption chains”



## «Кольца коррупции». Как кыргызские бизнесмены сымитировали конкуренцию на 83 млн сомов

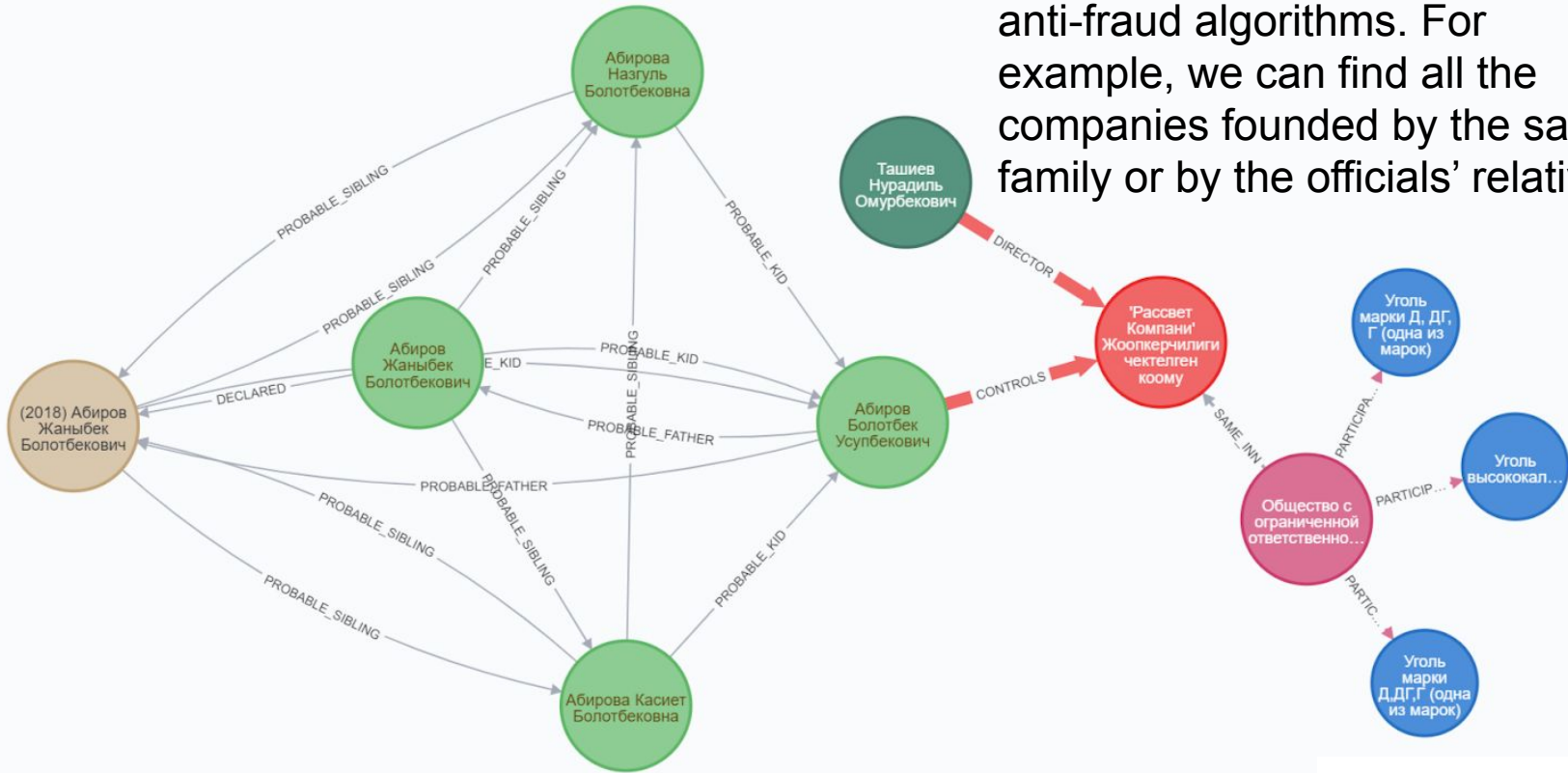
От [Екатерина Резникова](#) - 15 июля 2020



Иллюстрация: Алина Печенина для Kloop.kg

Дата-отдел «Клоопа» обнаружил, что в госзакупках регулярно участвуют компании, созданные одними и теми же людьми. Они имитируют конкуренцию и выигрывают тендеры без борьбы, ведь кроме них в торгах нет других участников. Закон запрещает заключать договоры с такими компаниями и называет это «конфликтом интересов».

We have a more complicated anti-fraud algorithms. For example, we can find all the companies founded by the same family or by the officials' relatives



## Миллиард в семью. Как сын депутата стал одним из главных поставщиков топлива для государства

От [Екатерина Резникова](#) · 02 сентября 2020

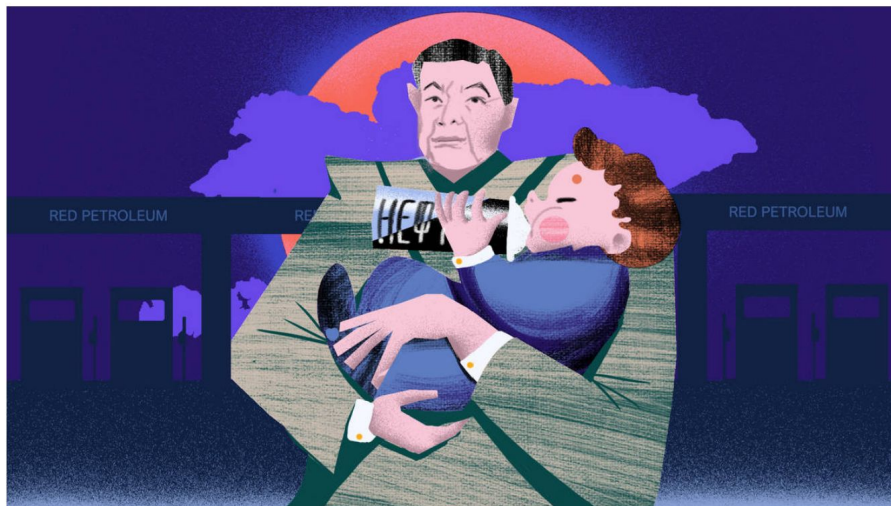
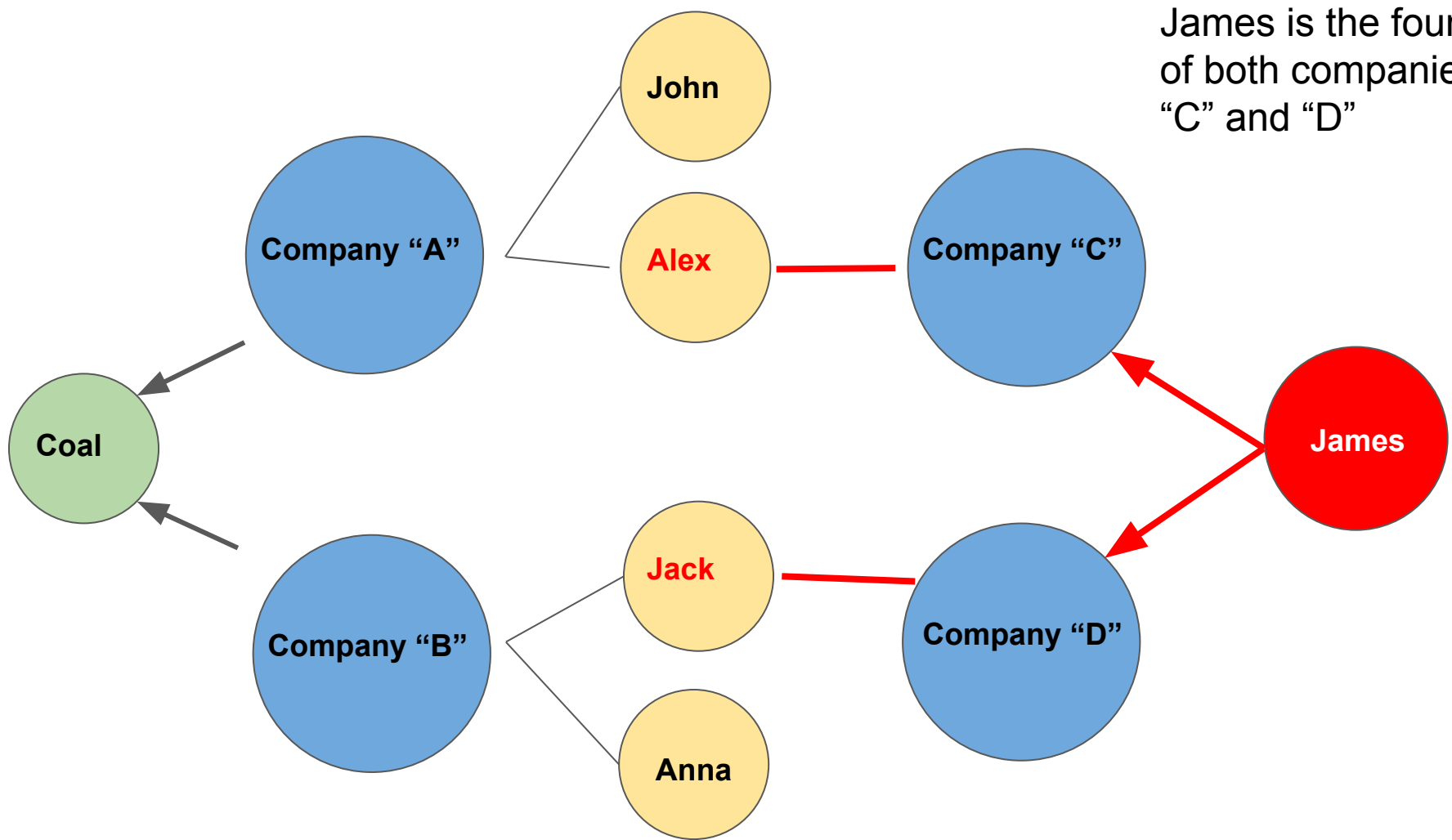


Иллюстрация: Алина Печенкина для Kloop.kg

С 2015 по 2020 год владелец сети заправок Red Petroleum Акылбек Маматов заключил более 3900 госконтрактов на поставку топлива, выручив на этом более 1 млрд сомов. Таким образом, один из крупнейших импортеров нефти стал вторым в стране поставщиком нефтепродуктов для государства.



James is the founder of both companies "C" and "D"



# Red Flags

How to find the suspicious procurements

## The problem:

- **Too many** tenders
- **Too many** corruption risks
- **We can't analyse each tender**

# We provide a script to find 15 risk indicators



Flags



Irregularities



Tenders



Entities

Procuring entity

Q Search

Irregularity

Q Search

Tender

Q Search

Search

ID	NAME	DESCRIPTION
NF028_KG-INN-00102201910016_214386652_214268436_214271150	Line item bid prices by different bidders are identical, very close or an exact percentage apart	Line item bid prices by diffe
NF028_KG-INN-00402201910220_215130555_214261565_214273220	Line item bid prices by different bidders are identical, very close or an exact percentage apart	Line item bid prices by diffe
NF028_KG-INN-00203201510242_216763546_214261565_214273220	Line item bid prices by different bidders are identical, very close or an exact percentage apart	Line item bid prices by diffe
NF028_KG-INN-20511196610011_216236599_214261565_214273220	Line item bid prices by different bidders are identical, very close or an exact percentage apart	Line item bid prices by diffe
NF025_KG-INN-01310201110040	Perennial losing bidders give appearance of legitimate competition when they have no intention of actually winning	Participation of a bidder tha
NF028_KG-INN-01706201410167_214381976_214261565_214273220	Line item bid prices by different bidders are identical, very close or an exact percentage apart	Line item bid prices by diffe
NF028_KG-INN-00402201910220_215130555_214261565_214274786	Line item bid prices by different bidders are identical, very close or an exact percentage apart	Line item bid prices by diffe
NF028_KG-INN-01106201910324_216588987_214261565_214274786	Line item bid prices by different bidders are identical, very close or an exact percentage apart	Line item bid prices by diffe
NF028_KG-INN-02603201910341_215220933_214280583_214280981	Line item bid prices by different bidders are identical, very close or an exact percentage apart	Line item bid prices by diffe
NF025_KG-INN-01310201410147	Perennial losing bidders give appearance of legitimate competition when they have no intention of actually winning	Participation of a bidder tha

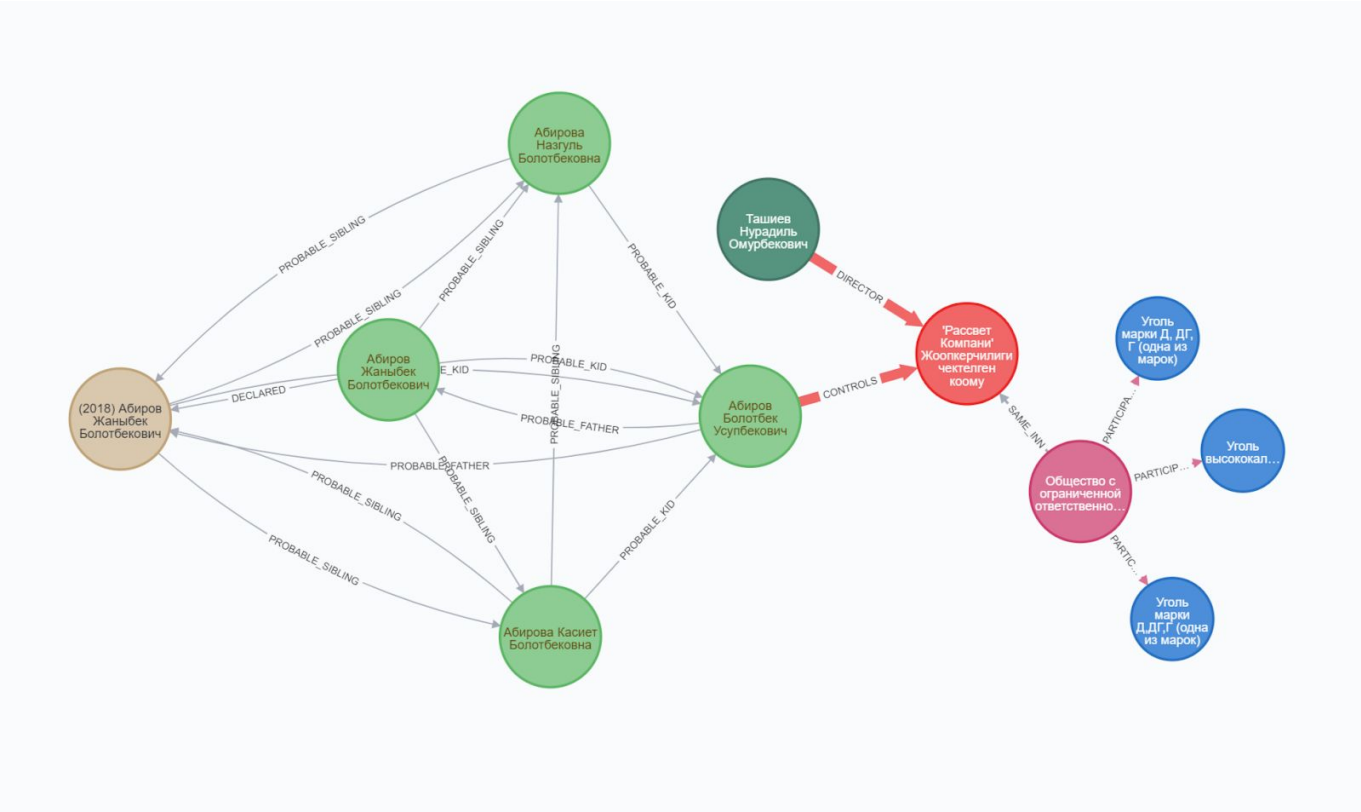
« Previous 1 2 3 Next »

## Simple Red flags:

- Single bid received
- Wide disparity in bid prices
- Improper acceptance of a late bid or late discounts
- Late bidder is the winning bidder
- Only winning bidder was eligible
- Winning supplier provides a substantially lower bid price than other bidders
- Perennial losing bidders give appearance of legitimate competition when they have no intention of actually winning
- Line item bid prices by different bidders are identical, very close or an exact percentage apart
- Business similarities between suppliers (or bidders): common addresses, phone numbers, etc
- Tender has a complaint
- Bid is too close to budget, estimate or preferred solution
- Large difference between contract price and winning bid price
- Long unexplained delays in contract negotiations or awards

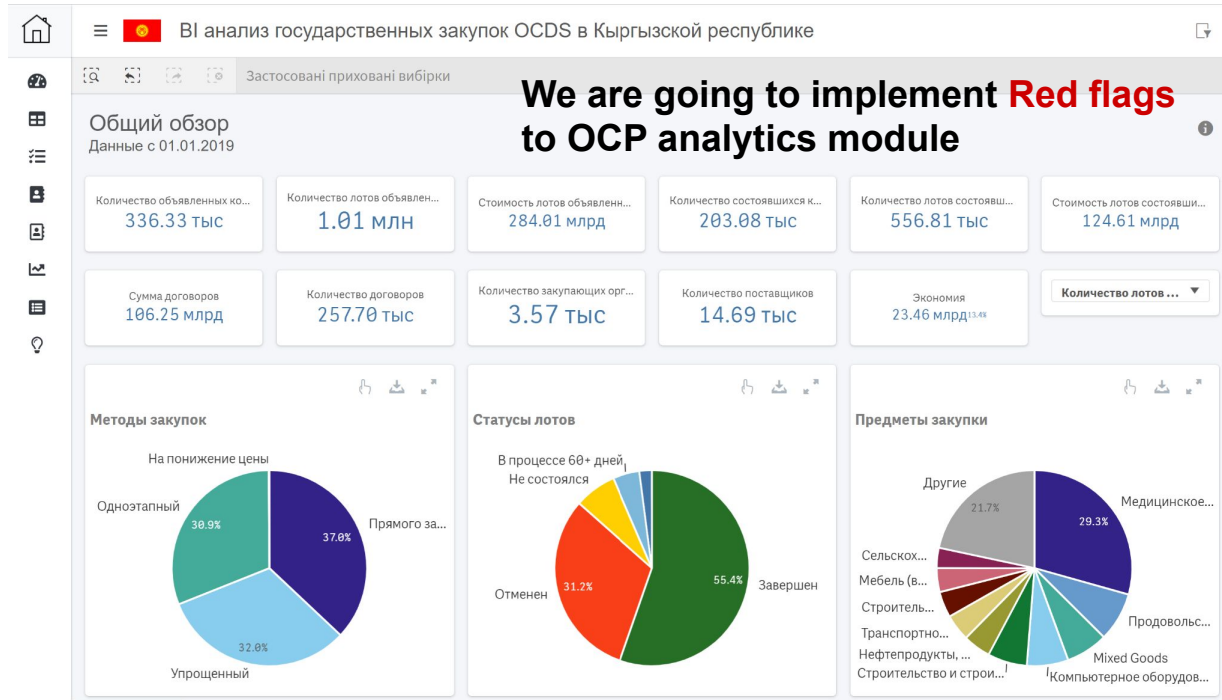
# Graph Red flags:

- Business similarities between suppliers: common personnel, founders or CEO
- Bidders are founded by official's relatives



# How to use **Red flags** script:

- data source for investigative journalism
- advocacy issues
- integration and collaboration



<https://neo4j.kloop.io> - кольца коррупции

<https://kloopmedia.github.io/RedFlagsFront/> - красные флаги

[https://kloopmedia.github.io/graph-montecristo/?url=https://raw.githubusercontent.com/KloopMedia/graph-montecristo-config/master/nodes\\_v6.json](https://kloopmedia.github.io/graph-montecristo/?url=https://raw.githubusercontent.com/KloopMedia/graph-montecristo-config/master/nodes_v6.json) - упрощенный интерфейс